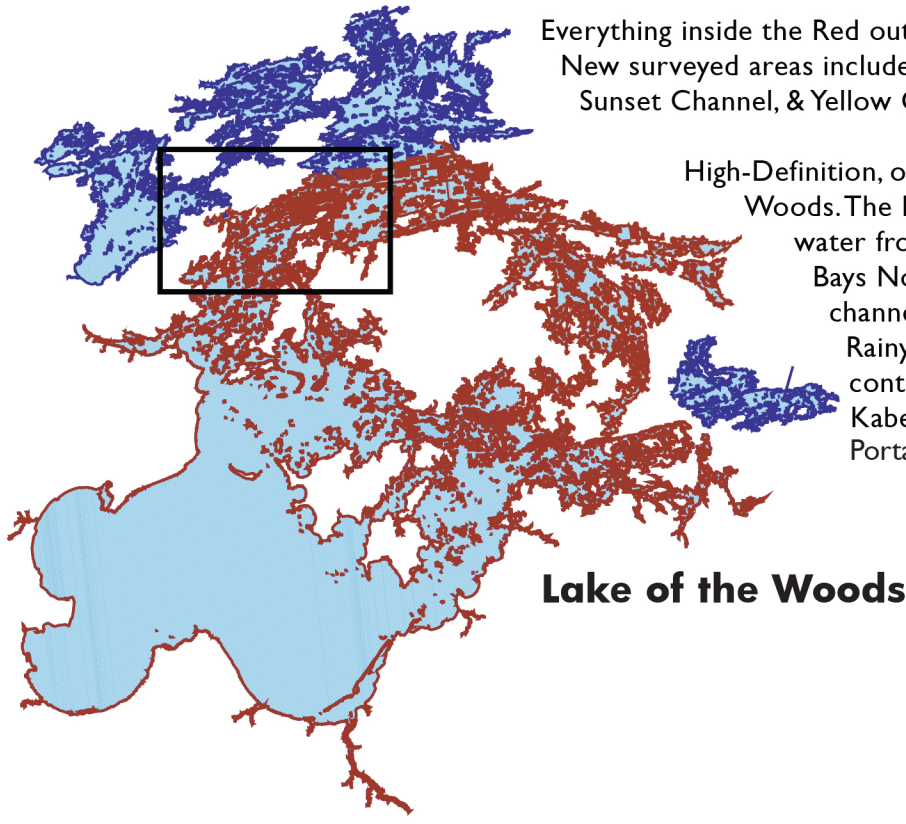


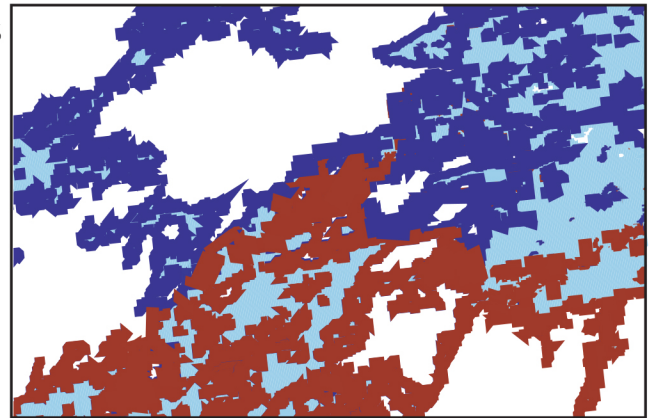
Everything inside the Red outline will display High-Definition, one-foot contours. New surveyed areas include Blueberry Inlet, Deadbroke Channel, Long Bay, Sunset Channel, & Yellow Girl Bay. Also includes detailed roads and base map.

High-Definition, one-foot Contours for nearly all of Lake of the Woods. The High-Definition detail covers all U.S and Canadian water from Big Narrows through Big Traverse & Sabaskong Bays North to Sioux Narrows and west beyond Deadbroke channel (750,000 total surveyed acres). Rainy Lake & the Rainy River now including High-Definition, one-foot contours for Redgut & Rice Bay, all of Lakes Kabetogama, Namakan, Sand Point, and Crane. Portage Bay and Outer Bay not yet surveyed.

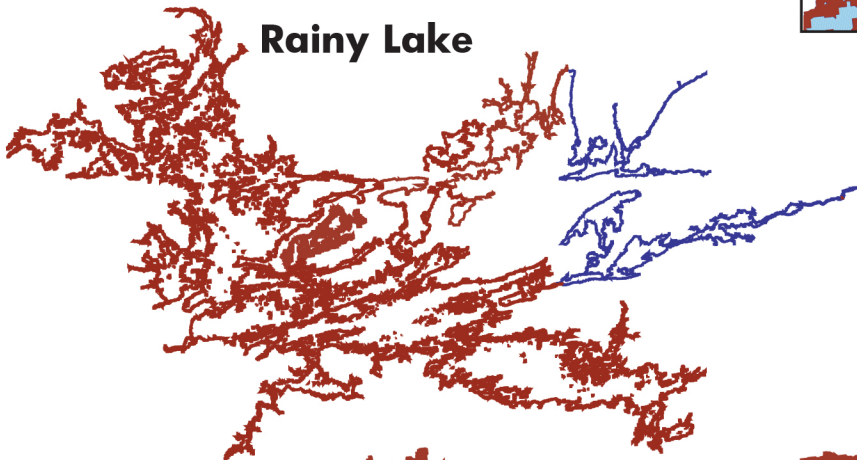
*Blue areas not surveyed, no contours.*



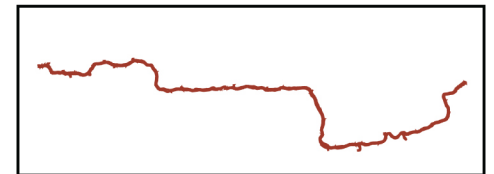
**Lake of the Woods**



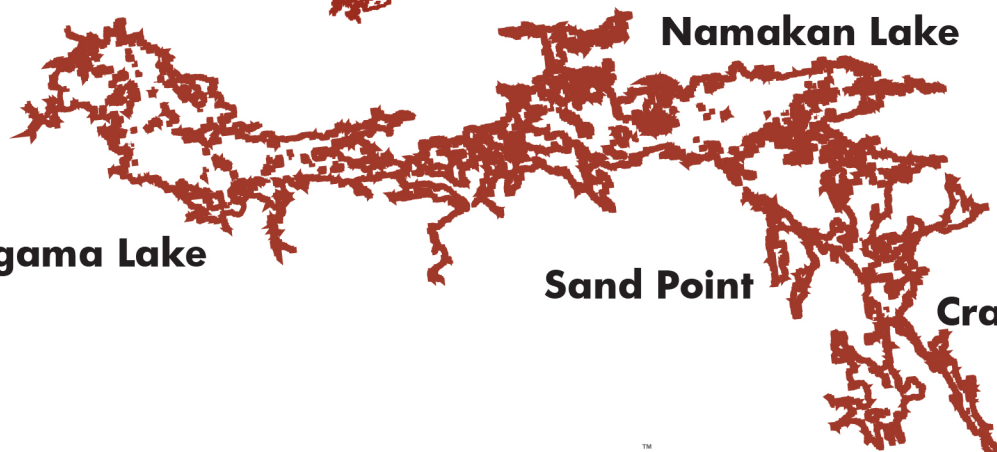
**Inset- Big Narrows**



**Rainy Lake**



**Rainy River**



**Namakan Lake**

**Kabetogama Lake**

**Sand Point**

**Crane Lake**

# Woods/Rainy Updated Surveys

*Updated water in yellow from version 3.*



**South East portion of Lake of the Woods**  
*Updated water in yellow.*  
PAGE 2  
*Note: The lake elevation at the time of survey was 1059 feet*

## SMARTSTRIKE COMPATIBLE LAKES

### LAKES LISTED AS THEY APPEAR ON THE PRODUCT

**Crane****Kabetogama (east)****Kabetogama (west)****LOW 1 (Buffalo Bay)****LOW 2 (Muskeg Bay)****LOW 3 (west of Falcon Island)****LOW 4 (west of Big Island)****LOW 5 (Fourmile Bay)****LOW 6 (east of Falcon Island)****LOW 7 (east of Big Island)****LOW 8 (south of Bigsby Island)****LOW 9 (Whitefish Bay)****LOW 10 (Sabaskong Pen.)****Namakan (east)****Namakan (west)****Rainy Lake 1 (Lyons Bay)****Rainy Lake 11 (Stokes Bay)****Rainy Lake 2 (Ash Bay)****Rainy Lake 3 (Woodchuck Island)****Rainy Lake 4 (Rainy River outlet)****Rainy Lake 5 (Hopkins Bay)****Rainy Lake 6 (Black Bay)****Rainy Lake 7****Rainy Lake 8 (Seine Bay)****Rainy Lake 9 (Saginaw Bay)****Rainy Lake 10 (Cormorant Bay)****Rainy River 1 (LOW inlet)****Rainy River 2 (Co Rd 4 to Co Rd 90)****Rainy River 3 (Barwick to Stratton)****Rainy River 4 (Hwy 613 to Barwick)****Rainy River 5 (Rainy Lake to Hwy 613)****Sand Point**

## UNDERSTANDING THE HUMMINBIRD LAKEMASTER LAKE LIST

**Lake Name, County**

Large reservoirs transcribe multiple counties which are cumbersome to list, so we usually identify only one for brevity's sake. Lakemaster will list the main county the Lake falls in or occasionally write "All, counties" to illustrate complete coverage. Unless Lakemaster has the Lake stated as "Partial HD", the entire lake will be mapped, regardless of the county displayed. We don't do partial maps, but if we did it would be identified as such.

**High Definition vs Standard Definition**

High Definition is ascribed to a chart by LakeMaster when the underlying data is of such high quality and density that the resulting map is very accurate. Only the most accurate and detailed surveyed data combined with the talents of our experienced GIS analysts earn the "High Definition" label. Our high definition lake charts have the highest level of accuracy, especially in the shallow "fishing structure" areas. In some cases, the bathymetric data to build the map has been gathered by LakeMaster's own survey team. We then identify that as "LakeMaster High Definition" chart with an asterisk.\*

**Contour Line Density**

Spacing of contour lines does not determine if a map is High Definition or not. LakeMaster uses 1-ft contours on most of our High Definition maps, but not all. On some lakes that are deep and have steep break lines we use may use 3-ft contour spacing, because the lines become so dense that it isn't functional. It's still High Definition i.e. "high accuracy".