

AT73TS23-2 shown

Application:

AT73 series antennas are high quality fiberglass HF antennas for marine coastal and SSB telephony bands. All feature a durable construction and a beautiful finish for installation on all kinds of vessels.

Mounting and feed variants are available to suite the customer requirement.

Electrical specifications:

Frequency range	1.6-30 MHz
Power rating	1 kW PEP
Static capacitance	70 pF @ 2MHz
Polarization	Vertical
Pattern	Omnidirectional
Electrical length	6.8 m (23 ft)
Feed system	Open wire, side or end fed

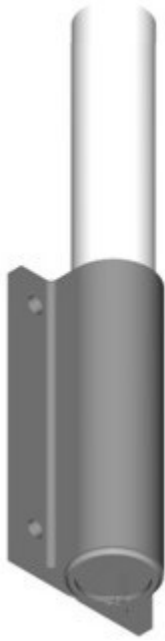
Mechanical specifications:

Design	Fiberglass whip in two sections. Stainless steel.
Height	24 ft (7.3 m)
Weight (typical)	5.1 kg
Sections	Base: 11.5 ft (3.5m) Top: 11.5 ft (3.5m)
Wind rating	55 m/s = 125 mph
Moment of flexure	85 kpm at 55 m/s
Deflection due to wind load	4.2 m (10 ft) at tip ball with 55 m/s wind load
Finish	Polyurethane lacquer, white. Chrome plated fittings
Temperature range	-55 °C, +71 °C, -67 °F, +160 °F
Ice build-up	Not affected

Mounting:

Antenna mounting and feed variants are available. See page 2 for details.

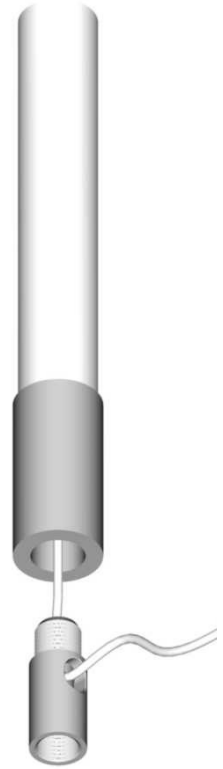
Antenna Variants:



AT73M23-2
Mast mount,
self supporting.
Side fed.



AT73D23-2
Deck mount,
Self-supporting.
End fed.



AT73TS23-2
Standoff mount.
Side fed
(with AV-C adaptor)

AT73M23-2 is mounted directly to the bulkhead by means of 4 holes in the aluminum bracket (bolts not supplied), or to a mast or tube with the supplied stainless steel U-bolts. Mounting pole diameters from 40-60mm.

AT73D23-2 is directly mounted to the bulkhead by means of the flange plate detailed below.

AT73TS23-2 is mounted to the superstructure with UNS 1x14 threaded base and support approximately 1.5 ft tall. Stand off support and base are not included. To have cable feed exit the bottom of the antenna, an AV-C adapter (included) is used.

