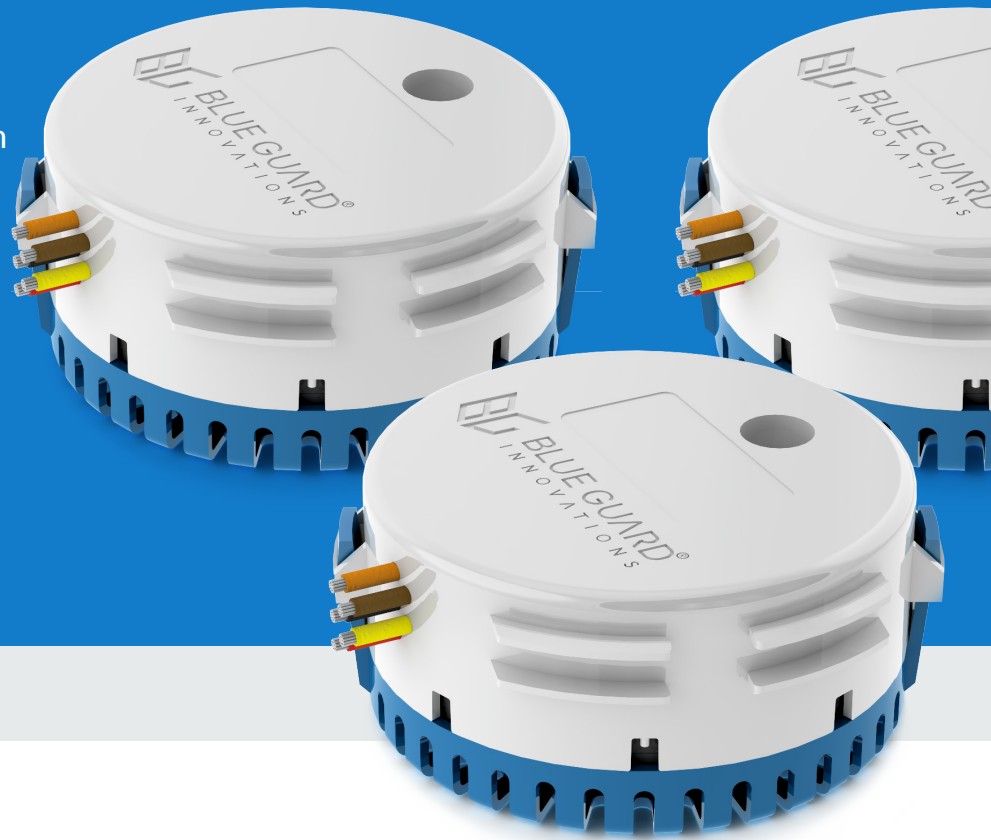


BG-SWA

Solid-State Bilge Pump Switch with High Water Alarm

SPEC SHEET



OVERVIEW

About

The BG-SWA (Solid-State Bilge Pump Switch with High Water Alarm) is a highly reliable bilge pump switch that is the ideal replacement for unreliable mechanical float switches with an integrated high water alarm. The BG-SWA uses two integrated sensors to detect liquid in the bilge while reliably activating the bilge pump. Having no moving parts that can be jammed or damaged, the solid-state BG-SWA is built to outlast all the mechanical float switches on the market today while alerting you of water presence in your bilge.

Reliability

With IP-68 rated durability, the BG-SWA is made with rugged, non-corrosive ABS plastic. The sensor comes with a heavy-duty mounting bracket to attach to a bulkhead or frame with #8x0.75" 316 stainless steel screws. Heavy-duty 14 gauge marine grade wires connect the BG-SWA to the bilge pump and the BG-JBox (Junction Box) that should be mounted high on a bulkhead, keeping the connections dry and reliable. The BG-SWA extends the life of the bilge pump due to its ability to significantly reduce current spikes during the activation of the pump. The BG-SWA has two integrated sensors to ensure a reliable and accurate detection.

How It Works

The BG-SWA will activate the bilge pump when water or any liquid is detected. The BG-SWA triggers the high water alarm when water is detected continuously for 3 seconds after the first detection (factory default setting) indicating that the bilge pump is either overwhelmed with excessive rising water or not working. Based upon bilge and pump size, the user can configure the alarm activation delay from 3-10 seconds. The BG-CP is recommended to display and sound the alarm. Users can use their existing panel with equivalent functions. The alarm output of the BG-SWA is a 12 or 24 Vdc with 1 amp max drive. The BG-SWA can be tested and its status can be viewed using the BGI Config App, which can be downloaded from the App Store or Google Play. The App is used on a mobile device with Bluetooth to wirelessly connect to the BG-SWA device. The App will report the input voltage level and system temperature. It also allows changing the name of the device for easy identification and testing the device. Set the pump run time after water detection via the BGI Config App. The high water alarm timing can be configured via the BGI Config App. The configurable range is 3-10 seconds. The BG-SWA also offers programmable splash protection, which can be used in rough waters or foul weather conditions to prevent false pump activation which can result in the pump running dry. Splash protection modes includes High (2 seconds, factory default setting), Medium (3 seconds), Low (5 seconds), and OFF.

FEATURES

Reliability

Two integrated sensors – solid-state with no moving parts or mechanical float switches that can easily be damaged or jammed

Solid-State Bilge Pump Switch

Solid-state bilge pump switch rated for up to 20 amp bilge pumps

Integrated Bluetooth Connectivity

Connects to the BGI Config App available on iOS and Android devices

Alarm Output

12 or 24 Vdc, 1 amp max

Max Current

20 amps

IP-68 Rated Durability

Rugged, non-corrosive ABS plastic housing and mounting bracket

Operating Voltage

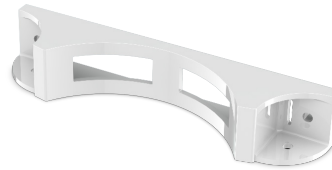
12 or 24 Vdc

Compact Size

Without Mounting Bracket (D x H) – 4.6 in x 2.0 in

With Mounting Bracket (L x W x H) – 5.9 in x 4.6 in x 2.0 in






Detachable Mounting Bracket



WIRES

Five Wire System

Heavy-duty 14 gauge marine grade wires, 6 ft long

-  (Orange) Pump Auto Control
-  (Brown) Pump Power
-  (Black) Supply Negative / GND
-  (Yellow) High Water Alarm
-  (Red) Pump Manual Control

USER PROGRAMMABLE FUNCTIONS

Configurable through the BGI Config App

Programmable Alarm

Delay activation from 3-10 seconds

Programmable Splash Protection

Off / High / Medium / Low

Programmable Pump

Run time 15-60 seconds

CONFIGURATION

