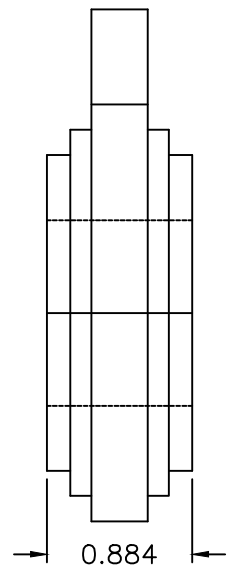


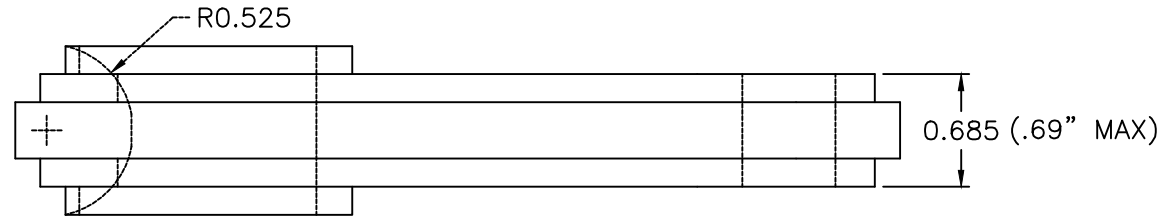
Fill-in welding to radius .5" and grind.

Section A-A

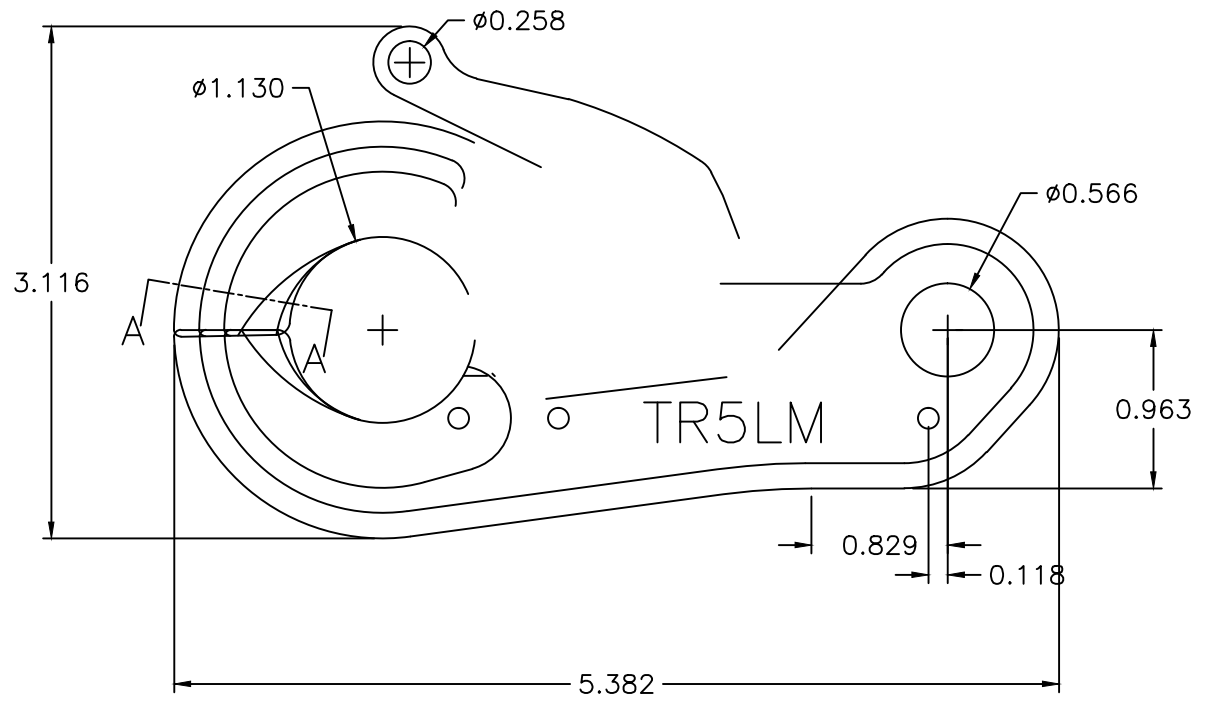
.375



Front End View



Top View



Side View

Material: 15-5 PH Stainless Plate in 1/8" and 3/8" nominal thickness.

OPEN JAW OPENING: .918" (23.31mm)

SWL: 3,323 lbs

McMillan
DESIGN, INC

9816 Jacobsen Lane
Gig Harbor, WA 98332
Tel: 253-858-1985
Fax: 253-858-1986
Email: jmcmillan@seacatch.com
Website: www.seacatch.com

Sea Catch TR5LM

SCALE: NTS	DRAWN BY JHM	
DATE: 12-25-98	REVISED: 09-28-04	
© 2010 JOHN McMILLAN	DRAWING NO. 092804B	

CONFIDENTIAL: THIS DESCRIPTION OR DRAWING CONTAINS PROPRIETARY INFORMATION OF JOHN MCMILLAN AND IS LOANED FOR USE ONLY IN EVALUATING OR BUILDING AN INVENTION OF JOHN MCMILLAN AND MUST BE RETURNED UPON DEMAND. BY ACCEPTANCE HEREOF, RECIPIENT AGREES TO ALL OF THE ABOVE CONDITIONS. © 2010 JOHN MCMILLAN 9816 JACOBSEN LANE, GIG HARBOR, WA 98332