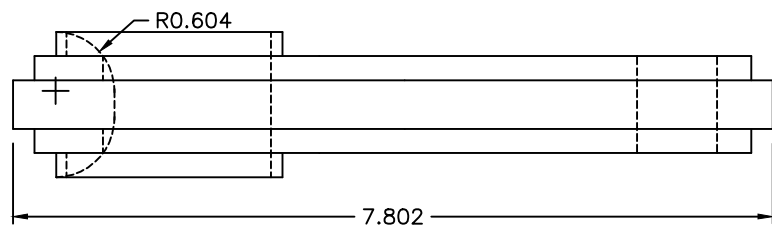
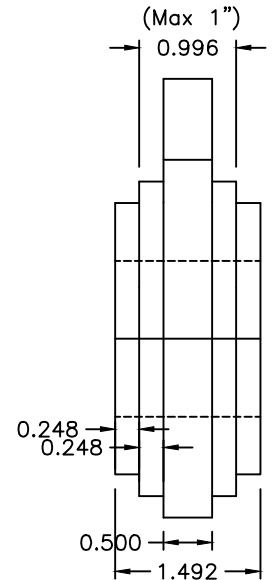


Section A-A

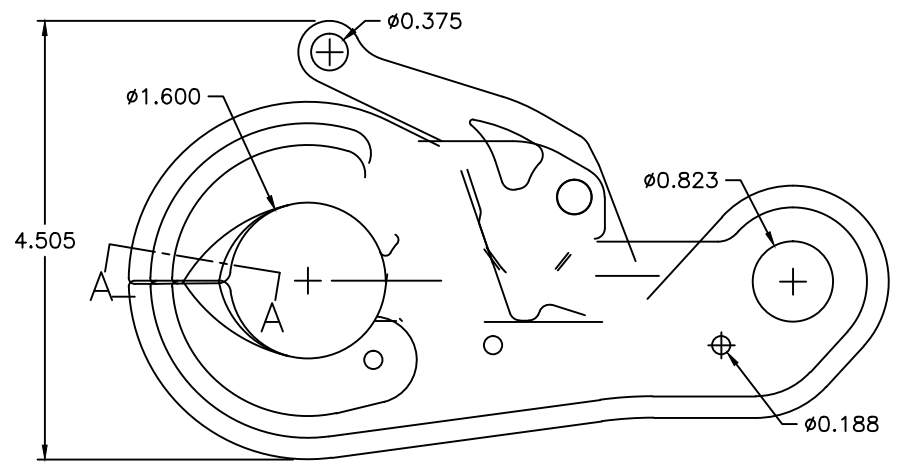
Fill-in welding to radius .6" and grind.



Top View



Front End View



Sea Catch TR7LM Assembly

Specs:  
 Weight: 4.8 lbs  
 Breakload: 35,210 lbs  
 SWL: 7,042 lbs  
 Recommended shackle (rear): 5/8"  
 Open Jaw Opening: 1.25"

Material: 15-5 PH  
 Stainless Plate in  
 1/2" and 3/16"  
 nominal thickness.

Approx. unit weight: 4.5 lbs.

**McMillan**  
**DESIGN, INC**

9816 Jacobsen Lane  
 Gig Harbor, WA 98332  
 Tel: 253-858-1985  
 Fax: 253-858-1986  
 Email: jmcmillan@seacatch.com  
 Website: www.seacatch.com

TR7LM

SCALE: NTS

DRAWN BY JHM

REVISED: 03/05/04

© 2002 JOHN McMILLAN

DRAWING NO. 030504A

CONFIDENTIAL: THIS DESCRIPTION OR DRAWING CONTAINS PROPRIETARY INFORMATION OF JOHN MCMILLAN AND IS LOANED FOR USE ONLY IN EVALUATING OR BUILDING AN INVENTION OF JOHN MCMILLAN AND MUST BE RETURNED UPON DEMAND. BY ACCEPTANCE HEREOF, RECIPIENT AGREES TO ALL OF THE ABOVE CONDITIONS. © 2004 JOHN MCMILLAN 9816 JACOBSEN LANE, GIG HARBOR, WA 98332