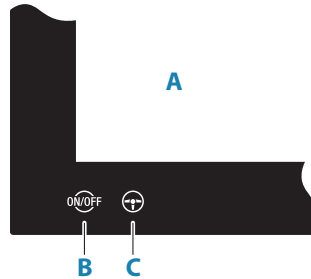


Front panel



A Touch Screen

B Power key

- Press and hold: turns the unit ON/OFF
- Short press once: displays the System Controls dialog
- Repeat short presses: toggles through preset dimming levels

C Wheel key - user configurable key. Refer to Operator manual.

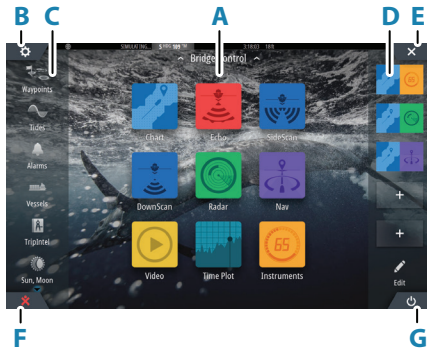
Default without an autopilot connected to the system:

- Short press: toggles between panels on split screen
- Long press: maximizes active panel on split screen

Default with an autopilot connected to the system:

- Short press: opens the autopilot controller and puts the autopilot in standby mode
- Long press: toggles between panels on split screen

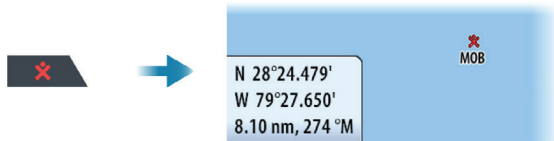
Home page



- A Application buttons
- B Settings button
- C Tools
- D Favorites
- E Close button
- F Man Over Board (MOB) button
- G Power button

The MOB mark

To create a MOB mark: press the MOB button.



To stop displaying navigational information to the MOB waypoint: cancel the navigation from the menu.

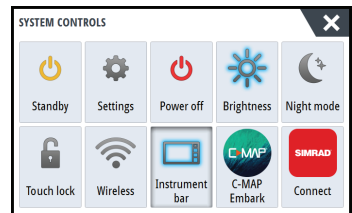
System Controls dialog

Used for quick access to system settings.

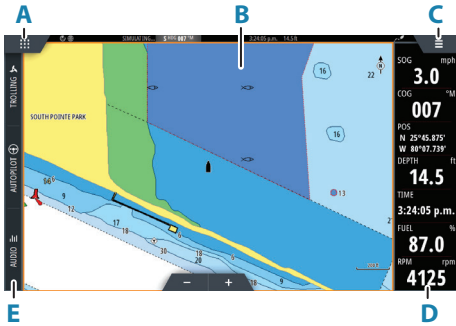
Activate the dialog by:

- Pressing the Power key
- Swiping from the top of the screen

→ **Note:** The content of the System Controls dialog depends on connected equipment and active panel.



Application pages

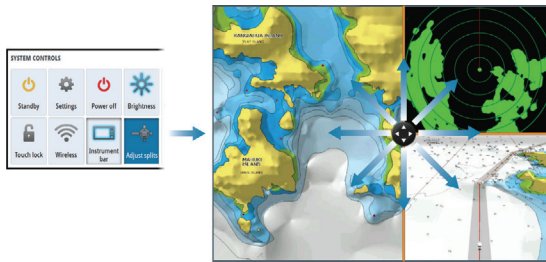


- A Home/pages button
- B Application panel
- C Menu button
- D Instrument bar
- E Control bar

Adjust panel size

You can adjust the panel sizes in a split page.

- 1 Tap the adjust split button in the System Controls dialog to show the resize icon
- 2 Drag the resize icon to set preferred panel size
- 3 Save the changes by tapping the screen



Charts

- Zoom the chart by using spread or pinch gestures or by using the zoom buttons.
- Move the view in any direction by panning the chart.
- Display information about a chart item by tapping the item.



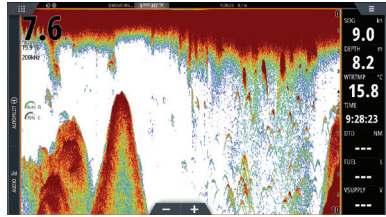
Waypoints

To create a waypoint: select the new waypoint option in the menu.

- ➔ **Note:** With cursor inactive, the waypoint is placed at vessel's position. With cursor active, the waypoint is placed at selected cursor position.

Echosounder

- Zoom the image by using the zoom buttons.
- View echosounder history by panning the image.
- Adjust gain and color using the slide bar in the menu.
- Toggle auto gain ON/OFF from the menu.



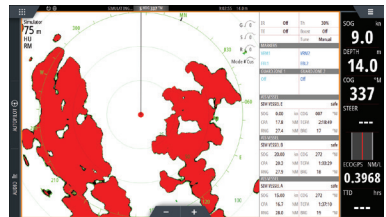
Autopilot

- Activate the autopilot controller from the Control bar.
- Select an autopilot mode by pressing the mode button from the Control bar.
- Switch to standby mode from the autopilot controller or by using physical Standby key.



Radar

- Turn the radar transmitting ON/OFF from the menu.
- Adjust radar range by using the zoom buttons on the radar panel.



Product manuals

For the full Operator manual, technical specifications and declarations, refer to the product website on: www.simrad-yachting.com