

P/N 08-66-010



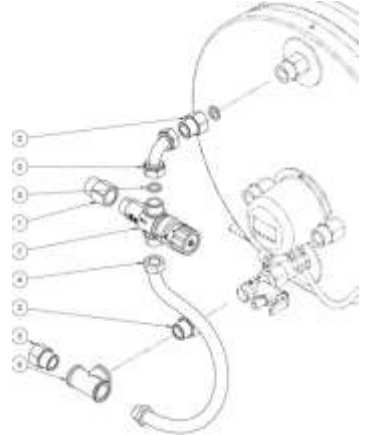
Water heater Mixer Kit NPT

Kit mezclador calentador de agua NPT



This kit holds the following components:

1. adapter NPT male 1/2" – BSP female 1/2"
2. adapter NPT female 1/2" – BSP male 1/2"
3. 1/2" washer
4. steel hose
5. 90° pipe
6. 1/2" Tee connection
7. thermostatic water mixer



Assemble the components as shown in the illustration. The threading have to be assembled using PTFE tape.

TEMPERATURE ADJUSTMENT : the knob position shows the outlet water temperature

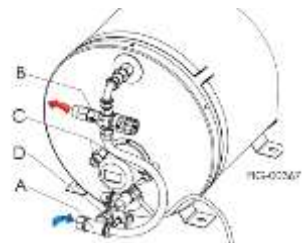
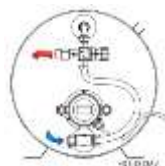
| knob position | MIN | 1 | 2 | 3 | 4 | 5 | MAX |
|---------------|-----|----|-----|-----|-----|-----|-----|
| temp (°F) | - | 86 | 100 | 108 | 126 | 149 | - |
| temp (°C) | - | 30 | 38 | 42 | 52 | 65 | - |

MAX WORKING PRESSURE : 1000 kpa (145 psi)

WORKING PRESSURE : 100-500 kpa (14 – 72 psi)

LEGEND :

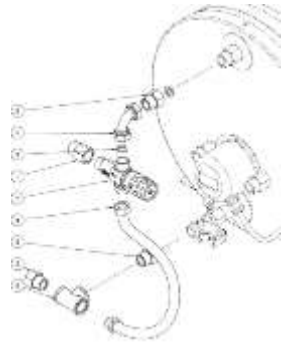
- A. cold water inlet
- B. hot water outlet
- C. heat exchanger connections
- D. safety valve





Este kit contiene los siguientes componentes:

1. adaptador NPT 1/2" M – BSP 1/2" F
2. adaptador NPT 1/2" F – BSP 1/2" M
3. junta
4. manguera flexible
5. tubo de 90 °
6. conexión en T de 1/2 "
7. extensión
8. mezclador termostático



Montar los componentes como se muestra en la figura. Sellar las conexiones roscadas mediante el uso de cinta de PTFE.

CONTROL DE TEMPERATURA: la posición del botón indica la temperatura de salida del agua

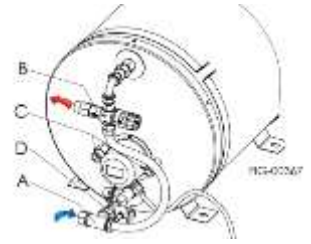
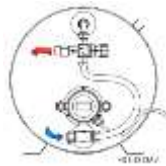
| posición de la perilla | MIN | 1 | 2 | 3 | 4 | 5 | MAX |
|------------------------|-----|----|-----|-----|-----|-----|-----|
| temp (°F) | - | 86 | 100 | 108 | 126 | 149 | - |
| temp (°C) | - | 30 | 38 | 42 | 52 | 65 | - |

PRESIÓN MÁXIMA DE TRABAJO: 1000 kpa (145 psi)

PRESIÓN DE TRABAJO: 100-500 kpa (14-72 psi)

LEYENDA:

- A. entrada de agua fría
- B. salida de agua caliente
- C. conexiones intercambiador
- D. válvula de seguridad



Suitable for the following P/N - *Adeguado para los siguientes P / N*

| | | |
|--|---|--------------------------------|
| | <p>P/N 08-01-024* Premium Water Heater 5.8G 120V P/N 08-01-025* Premium Water Heater 8G 120V P/N 08-01-026* Premium Water Heater 12G 120V P/N 08-01-027* Premium Water Heater 17G 120V</p> | <p><i>*from S/N B40321</i></p> |
| | <p>P/N 08-01-030 Premium Electric Square Water Heater 5.8G 120V P/N 08-03-030 Premium Square Water Heater 22l 230V</p> | |
| | <p>P/N 08-01-028* Premium Square Water Heater 5.6G 120V</p> | <p><i>*from S/N B40315</i></p> |