

SC3-ALSM SERIES

UNDERWATER LIGHT



DESCRIPTION

The SC3 underwater light provides your vessel 24 watts of intense LED lighting. The SC3's are designed with a sub-compact 3" diameter hard anodized aluminum housing for under the waterline surface mounting. Single color or color changing versions available with variable brightness and a wide array of control options.

FEATURES

- Proprietary clear gel-filled design, injected through entire unit – eliminates condensation and/or water intrusion under stress
- Tough, scratch resistant, tempered glass lens with hard anodized aluminum housing – impervious to acetone, solvents and demanding marine environments
- Transient surge and reverse polarity protection – dramatically prolongs unit life
- Thermal throttling technology – enables safe operation even out of water
- From simple on-off to full-feature lighting effects, unit is enabled for a host of control interfaces

2 CONTROL OPTIONS

1. Power Toggle Control

Quickly toggle power source to advance to next color or brightness level

2. Add Shadow-NET® Control

Dramatic, full-feature control through your Multifunction Display (MFD) by adding the Shadow-NET® control module (SCM-MFD-LC) & app

Shadow-NET® Modes

- Unlimited shades of color and fading
- Dimming • Strobe rate • Music sync
- Multiple zones • And much more...

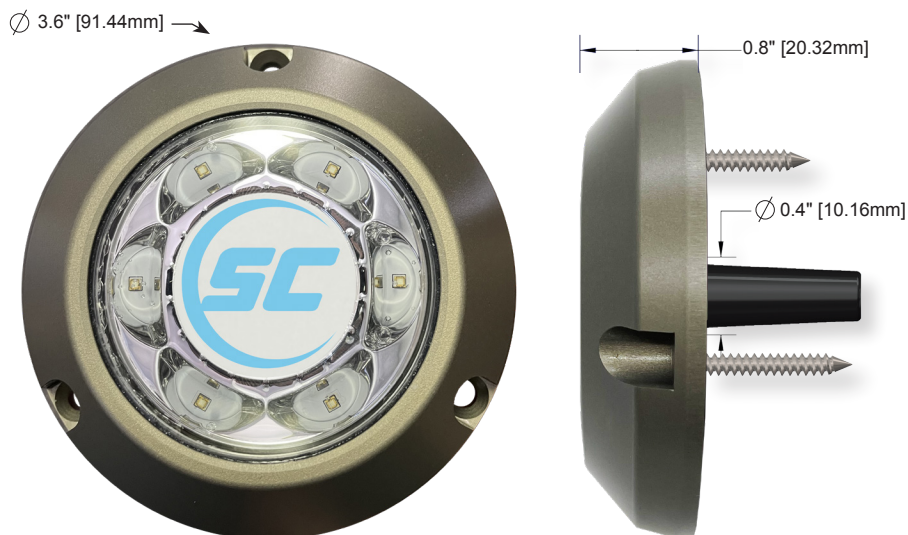
Dramatically enhanced lighting capabilities through your existing MFD




SPECIFICATIONS

- Up to 3,000 lumens
- 120 degree beam angle
- 24 watt power draw
- 2 amps operating current draw @ 12 v
- 10-30 volts input
- 3.6" (91.44mm) outside diameter
- IP68 fully submersible waterproof design

INCLUDES

- Lighting unit
- 3' (1m) submersible grade cable
- 3 mounting screws
- 3 year standard warranty



SC3-ALSM SERIES LIGHT COLOR MODELS	 BIMINI BLUE	 GREAT WHITE	 FULL COLOR 12-color standard, or unlimited colors with Shadow-NET®
MODEL #	SC3-BB-ALSM	SC3-GW-ALSM	SC3-CC-ALSM
BADGE IDENTIFIER			



Designed & Manufactured in Clearwater, FL
© 2021 Shadow-Caster® LEDs. All Right Reserved.

Shadow-Caster® LED Lighting | 2060 Calumet Street | Clearwater, FL 33765
p: +1 727.474.2877 e: info@shadow-caster.com w: shadow-caster.com