

Stainless Steel Thru-Hulls & Scupper Valve Fittings

Polish your image with these beautiful, durable stainless steel fittings. Each Thru-Hull and Scupper Valve is available with a new silicone gasket and are backed by Attwood's trusted Lifetime Warranty! Why specify plastic parts when these fittings will last the life of the boat?

Rugged Stainless Construction

- Cast from certified Enhanced 316 Stainless Steel alloy for strength and lifetime corrosion-resistance
- We polish all visible areas to a mirror finish, then passivate each part for additional protection
- Thick steel sidewalls withstand continual stress and hose flexing

Faster, Simpler Installation

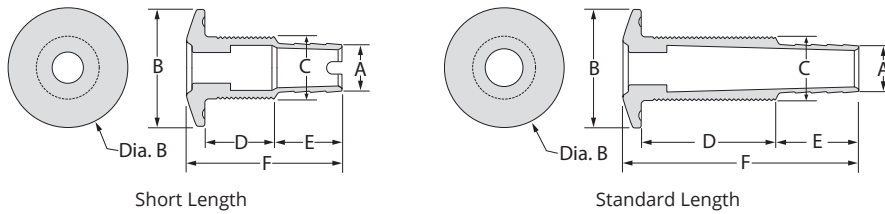
- A channel under the flange holds a bead of sealant, making it easier to apply a trouble-free seal
- All models have wrench flats or an end notch to hold as a gripping surface. One installer can tighten all connections from inside the hull
- Barbed tail ends provide plenty of room to hold multiple clamps



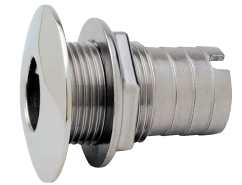
Stainless Steel Straight Thru-Hulls, Barbed

- Standard Thread model has full-length thread for thick hulls and easy tightening
- Short Thread is a more compact size. Allows installation near corners and in confined areas.

Caution: Stainless Steel Scupper Valves are designed for installation above the water line only.



66540G



66542



66546G



66548

A Hose Size	B Flange Dia.	C Thread O.D.	D Thread Length	E Barb Length	F Total Length	Install. Hole Saw Size	Thread NPSM	Max Hull Thick.	OEM Part # without Gasket	Part #
Short Length										
5/8" I.D.	1-7/8"	1"	1"	1"	2-1/4"	1-1/8"	3/4"	5/8"	66540-1	66540-3
3/4" I.D.	1-7/8"	1"	1"	1"	2-1/2"	1-1/8"	3/4"	5/8"	66541-1	66541-3
1" I.D.	2-1/4"	1-3/8"	1-1/8"	1"	2-1/2"	1-1/2"	1"	5/8"	66542-1	66542-3
1-1/8" I.D.	2-1/4"	1-3/8"	1-1/4"	1"	2-1/2"	1-1/2"	1"	5/8"	66543-1	66543-3
1-1/4" I.D.	2-1/4"	1-5/8"	1-1/4"	1"	2-5/8"	1-3/4"	1-1/4"	5/8"	66544-1	66544-3
1-1/2" I.D.	3"	1-7/8"	1-1/4"	1-1/2"	3-1/8"	2"	1-1/2"	5/8"	66545-1	66545-3
Standard Length										
5/8" I.D.	1-7/8"	1"	2"	1-1/4"	3-3/4"	1-1/8"	3/4"	1-1/16"	66546-1	66546-3
3/4" I.D.	1-7/8"	1"	2"	1-1/4"	3-3/4"	1-1/8"	3/4"	1-5/8"	66547-1	66547-3
1" I.D.	2-1/4"	1-3/8"	2-1/4"	1-1/4"	3-7/8"	1-1/2"	1"	1-3/4"	66548-1	66548-3
1-1/8" I.D.	2-1/4"	1-3/8"	2-3/8"	1-1/4"	3-7/8"	1-1/4"	1"	1-3/4"	66549-1	66549-3
1-1/4" I.D.	2-1/4"	1-5/8"	2-1/2"	1-1/4"	4-1/4"	1-3/4"	1-1/4"	1-7/8"	66550-1	66550-3
1-1/2" I.D.	3"	1-7/8"	2-1/2"	1-1/4"	4-1/8"	2"	1-1/2"	1-7/8"	66551-1	66551-3
2" I.D.	3"	2-3/8"	2-1/2"	1-3/4"	4-5/8"	2-1/2"	1-1/2"	2"	66552-1	—